

Choosing Secondary Schools & Full Subject-based Banding

4 Feb 2023





CHOOSING SECONDARY SCHOOLS



CHOICE ORDER OF SCHOOLS IS IMPORTANT

- Students will be posted to a secondary school based on academic merit i.e. overall PSLE score.
- If two or more students with the same PSLE Score vie for the last remaining place in a school, tie-breakers will be used in the following order:

1. CITIZENSHIP

2. CHOICE ORDER OF SCHOOLS (NEW for 2021 PSLE cohort onwards)


3. COMPUTERISED BALLOTING



EXAMPLE:


4 students - Jane, Bryan, Mary and John, are vying for the last places in School A and School B.

Jane
Singapore
Citizen




JANE'S
SCHOOL CHOICES
1. School A
2. ...
3. ...
4. ...
5. ...
6. ...

Bryan
Singapore
Citizen




BRYAN'S
SCHOOL CHOICES
1. School B
2. School A
3. ...
4. ...
5. ...
6. ...

Mary
Singapore
Citizen



MARY'S
SCHOOL CHOICES
1. School A
2. School B
3. School C
4. ...
5. ...
6. ...

John
Singapore PR



JOHN'S
SCHOOL CHOICES
1. School A
2. School B
3. School D
4. ...
5. ...
6. ...

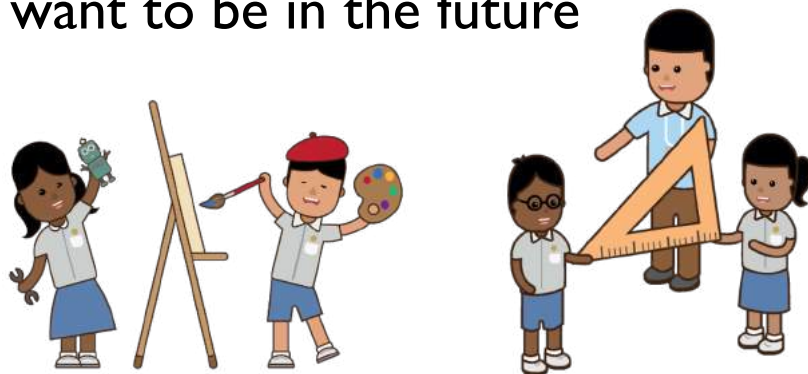
Students with better scores will be posted first	Jane will be posted first as she has a better PSLE score, and will be <u>posted to School A</u> .			As Jane has taken that last place in School A, Bryan, Mary and John, having the same PSLE score, will vie for the last available place in School B.	
Tie-breaker 1: Citizenship				Bryan and Mary are Singapore Citizens and will have a priority to enter School B.	John will be tie-broken out as he is a Permanent Resident. With no places in School B, <u>John will be considered for School D</u> .
Tie-breaker 2: Choice order of schools				As Bryan ranked School B higher than Mary in his choice order of secondary schools, <u>he will be posted to School B</u> .	Since the last place of School B is taken by Bryan, <u>Mary will be considered for School C</u> .
Tie-breaker 3: Computerised balloting					

What we tell our students:

Everyone is unique.

The more we know about ourselves, the better our choices will be.

- What are your dreams and goals?
- What do you enjoy doing?
- What do you think you are good at?
- Who do you want to be in the future and why?



Everyone's education journey is different.

There are many options for you to explore:

- What are the subjects, CCA or school programmes that can **nurture your interests and strengths?**
- **Which schools** and what are the **types of schools** that have such offerings?
- Which secondary school(s) would be **most suited for your interests, strengths and learning pace?**

No matter how you fare,
there will always be choices and opportunities for you
that can meet your learning needs and develop your interests and strengths.

Discuss With Your Child

- Consider your child's learning style, strengths and interests when making school choices in order to find a school that would help the child learn and thrive best.
- Discuss the options with the child, with the following considerations:
 - **Values:** What is the school's culture and ethos?
 - **Learning environment:** Is the school's learning environment right for the child?
 - **Distinctive programmes and CCAs:** Can the school support and develop the child's strengths & interests?
 - **Location:** Is it too far from home? How will the child get to school?



Resources to Help Students Choose Secondary Schools

Helpful information on our school website

- Secondary school posting process
- Direct School Admission for secondary schools (DSA-Sec)
- WEStories Flipbook
- ECG Parent Guide



<https://go.gov.sg/choosingaschool>

Direct School Admission (DSA)

- P6 students can seek admission to certain secondary schools based on their talent in sports, arts, CCAs and specific academic areas
- Start to explore and plan early (e.g. building portfolio)
- Applications will take place in the middle of the P6 year, through MOE's DSA-Sec Portal

DSA Talent Areas in West Zone Secondary Schools

Direct School Admission Talent Areas of West Zone Secondary Schools

Entrepreneurship and Innovation

DSA Talent Area	School
Innovation	Nanyang Girls' High School
Social Innovation	Westwood Secondary School

Languages and Humanities

DSA Talent Area	School
Bilingualism	Hwa Chong Institution
Debating	Nanyang Girls' High School
Debating and Public Speaking	River Valley High School
Public Speaking	Greenridge Secondary School
Humanities	Juying Secondary School
Chinese Language	Kranji Secondary School
English Language	Fajar Secondary School*
Malay Language	Hwa Chong Institution
Tamil Language	Methodist Girls' School (Secondary) - O-Level Programme
	Methodist Girls' School (Secondary) - Integrated Programme
	Bukit Panjang Govt. High School
	Fajar Secondary School*
	Commonwealth Secondary School
	Fajar Secondary School*

Leadership and Uniformed Groups

DSA Talent Area	School
Leadership	Bukit Batak Secondary School
	Bukit View Secondary School
	Hillgrove Secondary School
	Hua Yi Secondary School
	Hwa Chong Institution
	Jurong West Secondary School
	Juying Secondary School
	Nan Hua High School
	New Town Secondary School*
	Regent Secondary School
	River Valley High School
	Swiss Cottage Secondary School
	Zhenghua Secondary School
Leadership and Character	Greenridge Secondary School
	Nanyang Girls' High School

DSA Talent Area	School
Boys' Brigade	Jurong West Secondary School
	Nan Hua High School
	Regent Secondary School
Community Youth Leadership	Jurong Secondary School
	Tek Whye Secondary School **
Girls' Brigade	Regent Secondary School
	Clementi Town Secondary School
Girl Guides	Nan Hua High School
	River Valley High School
	Clementi Town Secondary School
	Jurong West Secondary School
	Nan Hua High School
	Clementi Town Secondary School
	Jurong West Secondary School
	Nan Hua High School
	Regent Secondary School
	Jurong West Secondary School
	Regent Secondary School
	Clementi Town Secondary School
	River Valley High School
St. John Brigade	Nan Hua High School

Performing Arts

DSA Talent Area	School
Concert Band	Boon Lay Secondary School
	Bukit Panjang Govt. High School
	Bukit View Secondary School
	Clementi Town Secondary School
	Commonwealth Secondary School
	Fuhua Secondary School
	Hillgrove Secondary School
	Hua Yi Secondary School
	Kranji Secondary School
	Nan Hua High School
	Nanyang Girls' High School
	Regent Secondary School
	River Valley High School
	Westwood Secondary School
	Yuhua Secondary School
Marching Band	Swiss Cottage Secondary School
	West Spring Secondary School
	Boon Lay Secondary School
	Bukit View Secondary School
	Commonwealth Secondary School
Choir	

DSA Talent Area	School
Choir	Hillgrove Secondary School
	Hua Yi Secondary School
	Nan Hua High School
	Regent Secondary School
	River Valley High School
	Swiss Cottage Secondary School
	Westwood Secondary School
	Yuhua Secondary School
	Clementi Town Secondary School
	Commonwealth Secondary School
	Hua Yi Secondary School
	Juying Secondary School
	Kranji Secondary School
	Nan Hua High School
	Nanyang Girls' High School
	River Valley High School
	Swiss Cottage Secondary School
	Clementi Town Secondary School
	Commonwealth Secondary School
	Boon Lay Secondary School
	Bukit View Secondary School
	Hillgrove Secondary School
	Hua Yi Secondary School
	Jurong West Secondary School
Modern Dance	Juying Secondary School
	Kranji Secondary School
	Nan Hua High School
	Tek Whye Secondary School **
	Westwood Secondary School
	Zhenghua Secondary School
	Boon Lay Secondary School
	Bukit Batak Secondary School
	Clementi Town Secondary School
	Commonwealth Secondary School
Malay Dance	Hillgrove Secondary School
	Juying Secondary School
	Swiss Cottage Secondary School
	Zhenghua Secondary School
	Hua Yi Secondary School
Chinese Drama	Nan Hua High School
	River Valley High School
	Boon Lay Secondary School
	Bukit Batak Secondary School
	Bukit View Secondary School
English Drama	Clementi Town Secondary School

DSA Talent Area	School
English Drama	Commonwealth Secondary School
	Hua Yi Secondary School
	Nan Hua High School
	River Valley High School
	Swiss Cottage Secondary School
Guitar Ensemble	Westwood Secondary School
Guzheng Ensemble	Hua Yi Secondary School
Harmonica Ensemble	Nan Hua High School
String Ensemble	Yuhua Secondary School
Music Elective Programme	Nanyang Girls' High School
	Methodist Girls' School (Secondary) - O-Level Programme
	Methodist Girls' School (Secondary) - Integrated Programme
	Boon Lay Secondary School
	Bukit Batak Secondary School
	Bukit Panjang Govt. High School
	Fuhua Secondary School
	Nan Hua High School
	Nanyang Girls' High School
	River Valley High School
	Swiss Cottage Secondary School
	Boon Lay Secondary School
Chinese Orchestra	
Theatre	

Science, Technology, Engineering and Mathematics

DSA Talent Area	School
Aerospace and Aviation	Bukit View Secondary School
	Bukit View Secondary School
	Clementi Town Secondary School
	Commonwealth Secondary School
	River Valley High School
Coding	
Design and Technology Innovation	River Valley High School
Electronics	Jurongville Secondary School
	Bukit View Secondary School
	Commonwealth Secondary School
Environmental Science	River Valley High School
Food Science and Technology	Dunearn Secondary School

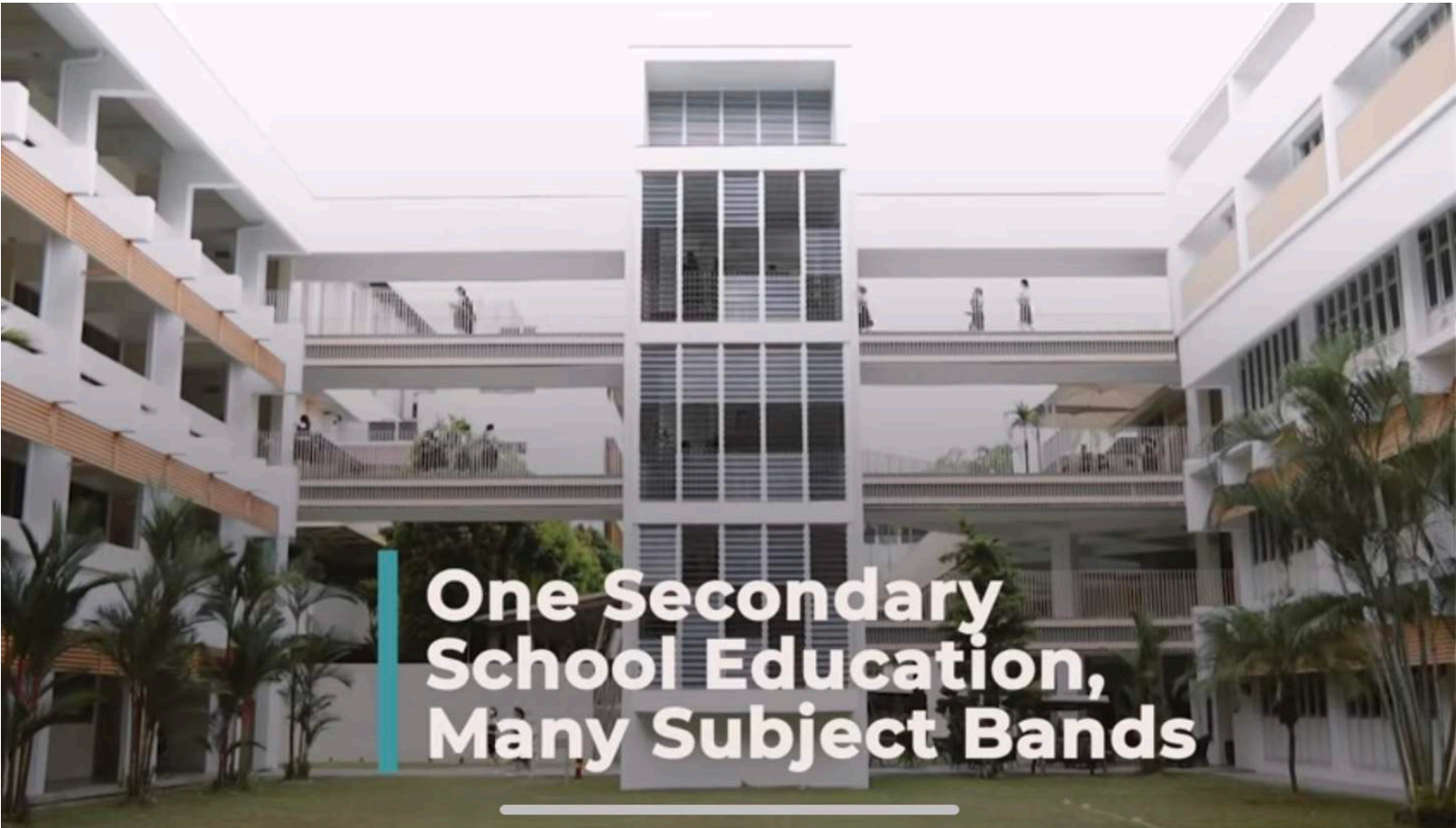


<https://go.gov.sg/dsawest>



FULL SUBJECT-BASED BANDING (FSBB)





Full Subject-based Banding: Students learn each subject at the level that best caters to their overall strengths, interests and learning needs.

Explaining Full Subject-Based Banding

: https://www.youtube.com/watch?v=JMc_GispPmk

FSBB in Secondary Schools from 2024 onwards

I. Removal of Express, Normal(Academic) [N(A)] and Normal(Technical) [N(T)] courses

- Students will **continue to be posted into secondary schools through three scoring bands**
- Throughout their secondary school education, students can **take subjects at three subject levels, known as G1, G2, G3** (G stands for General), mapped from today's **N(T), N(A) and Express standards respectively.**

FSBB in Secondary Schools from 2024 onwards

2. Mixed form classes at lower secondary

- Once posted into the school, students will be grouped into mixed form classes, with each form class comprising students of different learner profiles.
- Mixed form classes offer more opportunities for students to interact with other students
 - taking different subject combinations
 - with different strengths and interests.

FSBB in Secondary Schools from 2024 onwards

3. Offering subjects at a more or less demanding level

- From the start of Secondary One, all secondary school students can offer **English Language, Mother Tongue Languages, Mathematics and Science** at a more demanding level based on students' PSLE Achievement Level (AL) for each subject.

Subjects offered under SBB(Sec)	Eligibility criteria		
	PSLE subject level	PSLE AL for the specific subject	Option to take the Secondary One subject at:
<ul style="list-style-type: none">English LanguageMother Tongue LanguagesMathematics	Standard	AL 5 or better	G3 or G2
		AL 6	G2
	Foundation	AL A	G2
<ul style="list-style-type: none">Science			

FSBB in Secondary Schools from 2024 onwards

3. Offering subjects at a more demanding level

- From Secondary Two, students will also be able to offer **Humanities subjects** at a more demanding level. The criteria for taking Humanities at a more demanding level will be based on students' aptitude for and interest in these subjects at Secondary One.

Humanities subjects offered under Full SBB	Eligibility criteria		
	Humanities subject level	School-based assessment	Option to take Humanities at a more demanding level from Secondary Two:
<ul style="list-style-type: none">GeographyHistoryLiterature in English	G2	Aptitude and interest for specific subject	Any of these subject(s) at G3
	G1		One of these subjects at G2

FSBB in Secondary Schools from 2024 onwards

3. Offering subjects at a less demanding level

- Students who face **exceptional difficulties coping with MTL** learning will have the **option to offer G1 or G2 MTL**. MTL 'B' will be discontinued in secondary schools.
- Students who offer subjects at a less demanding level may subsequently offer the subject at a more demanding level as they gain greater competence and confidence in the subject.

Scan the QR code to access more information regarding FSBB



<https://go.gov.sg/moefsbb>