



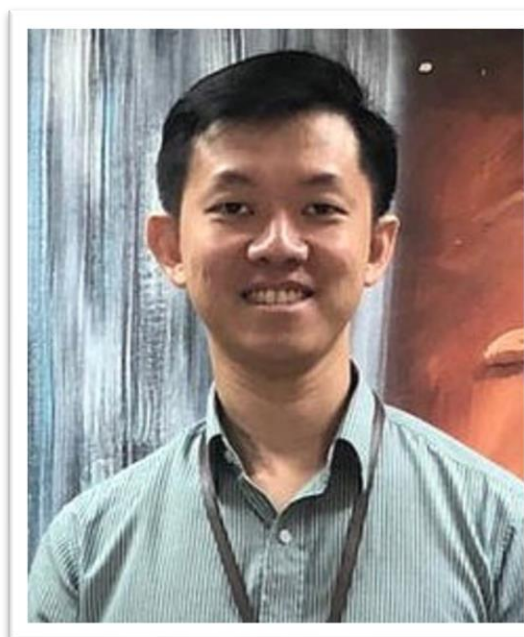
Zhenghua Primary School

Music Department

Mrs Patsy Long
Teacher

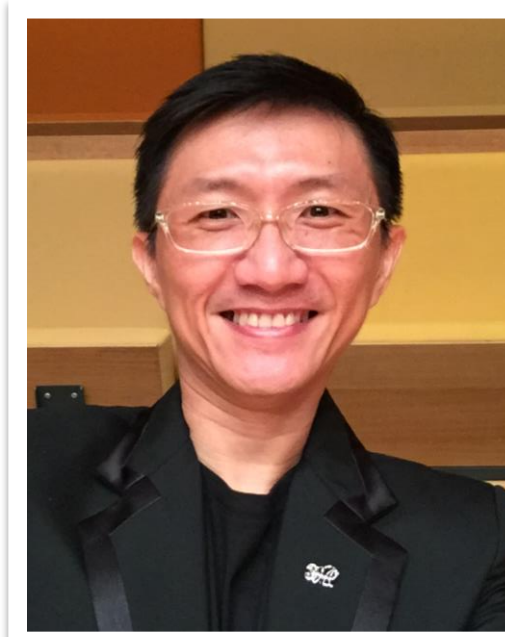


Mr Chua Liang Cun
Teacher



1HY, 1RE, 1RT, 1CE, 1CN, 1EE

Mr Loo Teng Kiat
Lead Teacher (Music)



1IY, 1IN



About the curriculum

	T1	T2	T3	T4
P6		Korean/Japanese Culture		
P5	Polynesia/Oceania Culture			
P4	Indian Culture			
P3	Malay Culture			
P2	Chinese Culture			
P1	Western tradition			

M.A.D. aesthetics alignment

Music

e.g.

P2 Chinese music
P3 Malay music
P4 Indian music

Art

e.g.

P2 Chinese paper cutting
P3 Batik Painting
P4 Kolam

Dance (DArE)

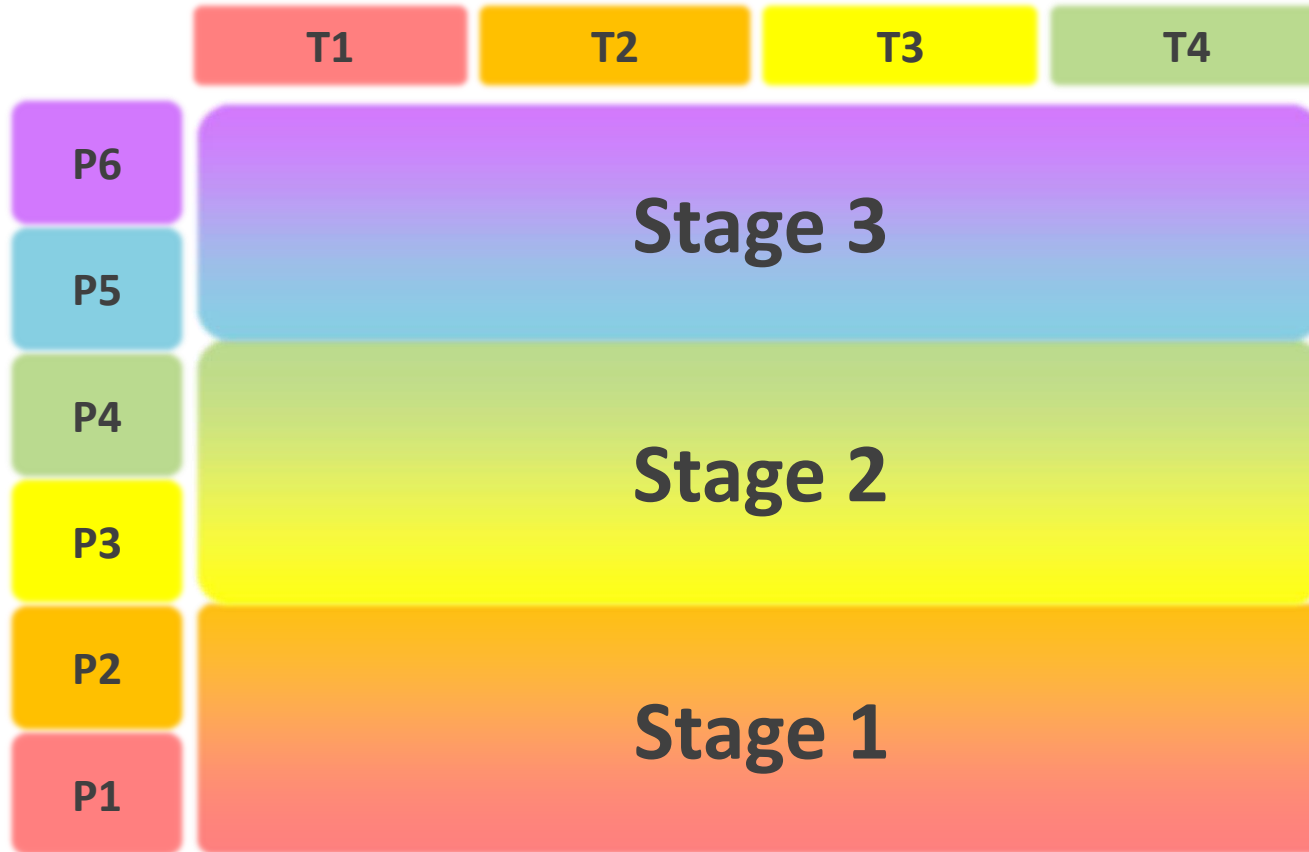
e.g.

P2 Chinese Dance
P3 Malay Dance
P4 Indian Dance





About the curriculum



2 lessons (1 hour per week)

P1 and P2 (2023 Syllabus)

3 Learning Outcomes

LO1 Listen and Respond to Music

LO2 Create Music in both vocal and instrumental settings, individually and collaboratively

LO3 Perform Music in both vocal and instrumental settings, individually and collaboratively where students respectively:

A. Sing

B. Play Instruments



P1 curriculum at a glance

Western tradition



Folk/Children's songs

- Love singing
- Pitch, intervals
- Call & respond
- Routine songs

Arias



Unpitched Percussion

- Beat/pulse, rhythm
- Texture/timbre
- Coordination

Strings and Woodwinds
Brass and Percussions



Ensemble

- Singing and playing in a (large/small) ensemble

Western classical orchestra,
Operas & musicals, Ballet



Music and Movement

- Move to the beat
- Coordination

Dance



Assessment Practices

Tasks

Term 1

Sing a song with **accurate pitch** and a **steady beat** confidently in a **large ensemble**.

Term 2

Play a beat or rhythm **while singing** with accurate pitch, rhythm and tempo in a **large ensemble**.

Term 3 & 4

Play a beat or rhythm **while singing** with accurate pitch, rhythm and tempo **in a small ensemble**.

Formative Rubrics

In student-friendly language (promote self-assessment and peer feedback against the success criteria).

Evaluation

At the end of each semester, **detailed descriptors** are given **to reflect students' learning**.

Data is based on **multiple sources** (peer, quizzes, live performances in the classroom).

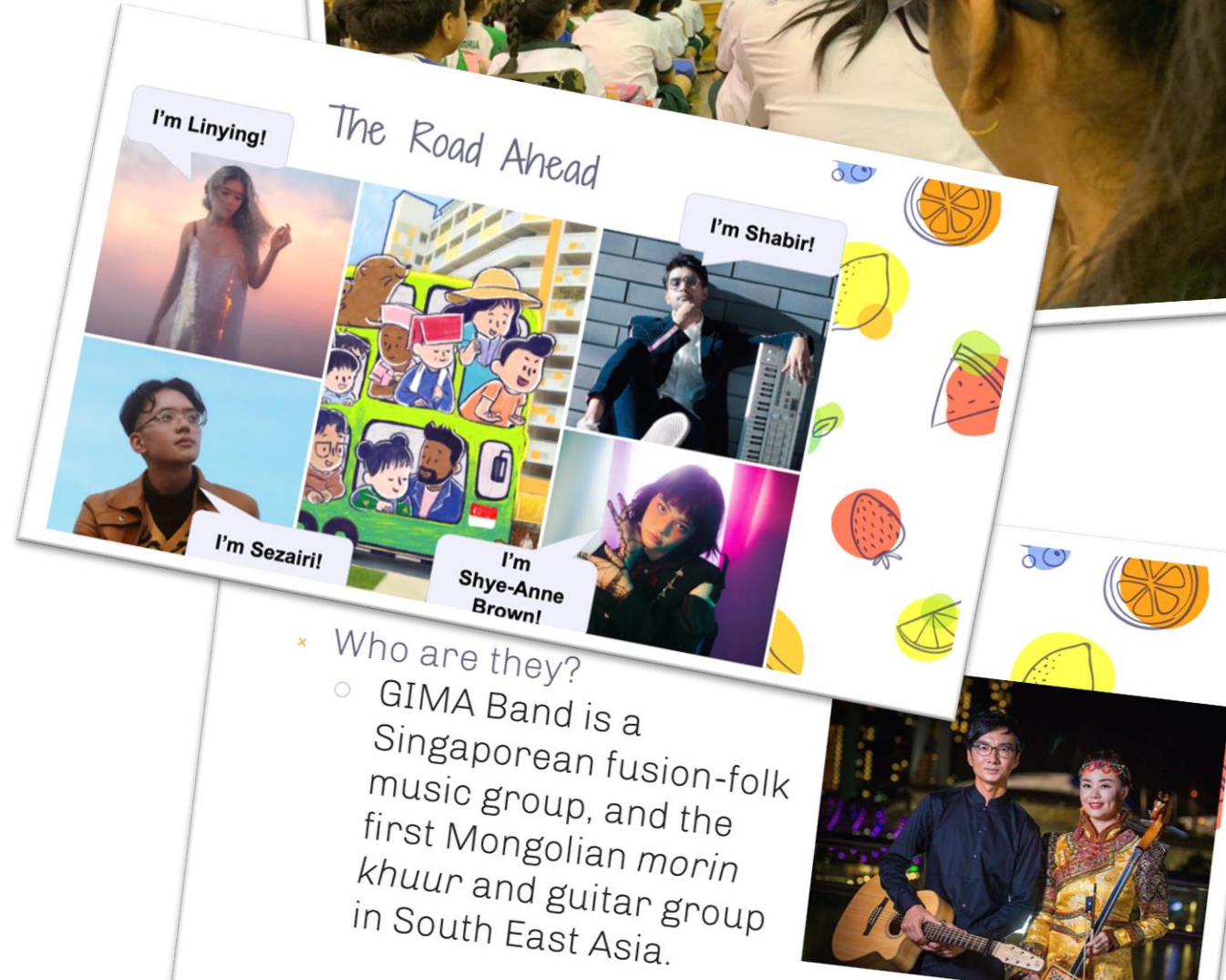
Taking the best performance (or score) from a series to **reflect students' best efforts**.



School-wide Programme

Arts Alive!

Presentation of songs, musical instruments, ensembles and performances, together with the Art department and the Performing Arts groups.



- ✦ Who are they?
 - GIMA Band is a Singaporean fusion-folk music group, and the first Mongolian morin khuur and guitar group in South East Asia.

ZHENGHUA PRIMARY SCHOOL

MUSIC WEBSITE

[Home](#)[HBL](#)[Resources](#)[Teachers' Day](#)[Music Appreciation](#)[Music Sharing](#)[Music Groups](#)

<https://tinyurl.com/zhpsmusic>

ZHPS General Music Programme

The Zhenghua Primary School (ZHPS) General Music Programme (GMP) enables our students to listen, sing, dance, play and express themselves musically.

The GMP in ZHPS aims to

- Develop awareness and appreciation of music in local and global cultures
- Develop ability for creative expression and communication through music
- Provide the basis to develop an informed and life-long involvement in music