

Laying a Strong Foundation in Zhenghua Primary School

Mrs Lee Boon Kwang, Year Head P1/P2



Resilience, Innovation, Integrity, Care, Collaboration and Excellence

Student Development Team (SDT) Lower Primary

Primary One: Mrs Lee Boon Kwang
Year Head



Primary Two: Mdm Sieow Kim Lian
Assistant Year Head



Resilience, Innovation, Integrity, Care, Collaboration and Excellence

School Hours (Primary One)

- **Week 1**

Tuesday (3rd Jan): 8.30am – 12.30pm

Wednesday to Friday: 7.30am – 11.00am

- **Week 2**

Monday to Thursday: 7.30am– 1.15pm

Friday: 7.30am – 12.45pm

Snack Time: 11am



Dismissal

- All students will be accompanied by their class teacher to Gate 2, Gate 3 or the School Lobby (for those taking the School Bus).
- Please wait for your child at the designated gate and be on time, to reduce your child's anxiety.
- Please do not change the pickup point without informing your child's Form Teachers.



Dismissal Gates

Gate 2 – Block 401



Resilience, Innovation, Integrity, Care, Collaboration and Excellence

Void Deck of Block 401



Resilience, Innovation, Integrity, Care, Collaboration and Excellence

Dismissal Gates

Gate 3 – Bus Stop



Dismissal

- If your child is attending the school-based Student Care Centre (SCC - YMCA) at our school, the SCC staff will pick them up from their classrooms to take them to their respective SCC classrooms.
- If they are from external SCCs, there are designated waiting areas for them to wait for the external SCC staff.



Name Tag/ Lanyard

- Please get your child to wear the name tag with the gate number/school bus number so that the teacher knows which gate to send your child to for dismissal.



Zhenghua Primary School

Name :

Class : 1CE

Dismissal Gate: _____

- Gate 2: Side Gate beside Blk 401
- Gate 3: Side Gate beside bus stop
- Lobby: School Bus
- Dismissal by Student Care Centre

Transportation Mode and Info:

Dismissal By:

School Bus / Personal Transport / Student Care*

School Bus No. / Vehicle No. : _____

Name of Student Care Centre (if any):

Emergency Contact No. : _____

*To delete where appropriate



Resilience, Innovation, Integrity, Care, Collaboration and Excellence



Holistic Assessment (HA)

To support the learning
and
development of the child



Resilience, Innovation, Integrity, Care, Collaboration and Excellence

Aim of Primary Education

- ❖ To lay a strong foundation
- ❖ To nurture the whole child

Values

Life skills

Social behaviour



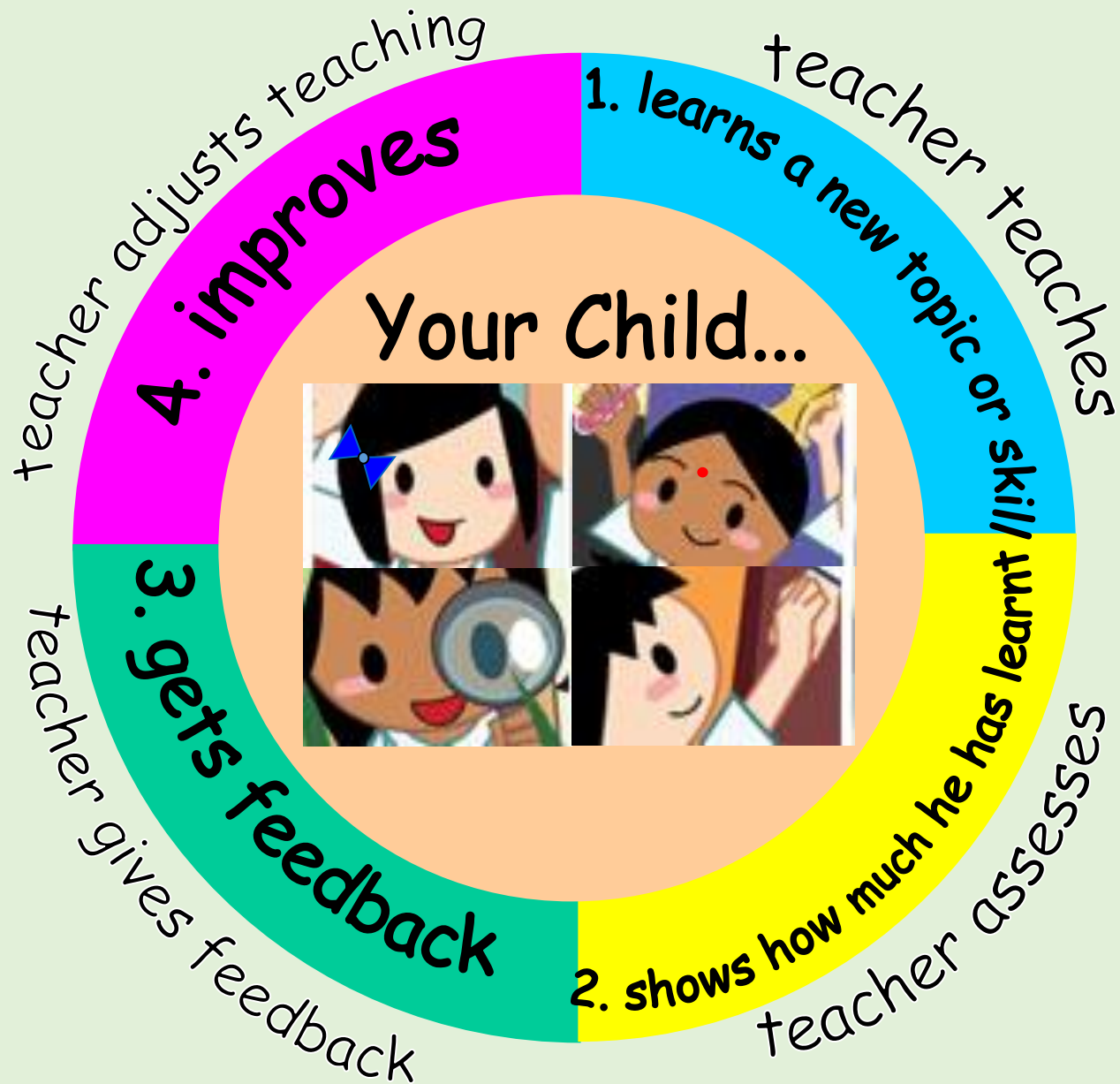
Develop the WHOLE child

Every subject is important



Resilience, Innovation, Integrity, Care, Collaboration and Excellence

Assessment is part of learning



Changes to School-Based Assessment (SBA)

	From 2019
Reduce SBA Load	P1 & P2 - Remove all weighted assessments
SBA	Use of qualitative descriptors to report learning in all subjects

ZHPS – At the end of the year, P1 students will stay with their classmates and move together to the same P2 classes.



Resilience, Innovation, Integrity, Care, Collaboration and Excellence

Assessment at Primary 1



Non-weighted

✓ **Different types of assessments**

e.g.

- **Topical Reviews**
- **Short Writing**
- **Reading**
- **Performance Tasks**

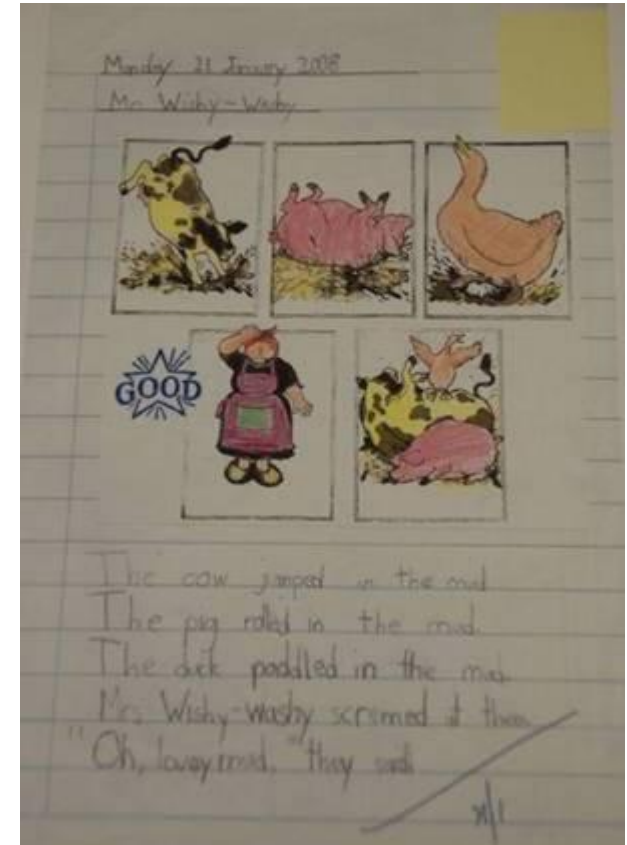
✓ **Shorter assessments**

✓ **More and richer feedback**

- ~~Mid Year Exam~~
- ~~Year End Exam~~



How will my child be assessed for Languages?



Story Writing



Resilience, Innovation, Integrity, Care, Collaboration and Excellence



Show and Tell



Reading Tasks



Simple Writing Tasks



Teachers ask questions and give feedback to improve pupils' learning



Resilience, Innovation, Integrity, Care, Collaboration and Excellence

READING ALOUD RUBRICS

Descriptors	☺	☺☺	☺☺☺	☺☺☺☺
Pronunciation	Pronunciation is unclear, with many errors	Pronunciation is somewhat unclear; with a number of noticeable errors	Generally clear pronunciation, with a number of noticeable errors	Clear and consistently good pronunciation
Fluency	Very slow and jerky reading of words, with many words skipped or unread	Slow and hesitant reading with many words skipped or unread	Reading is somewhat fluent with some words skipped or unread	Consistently fluent reading without hesitation



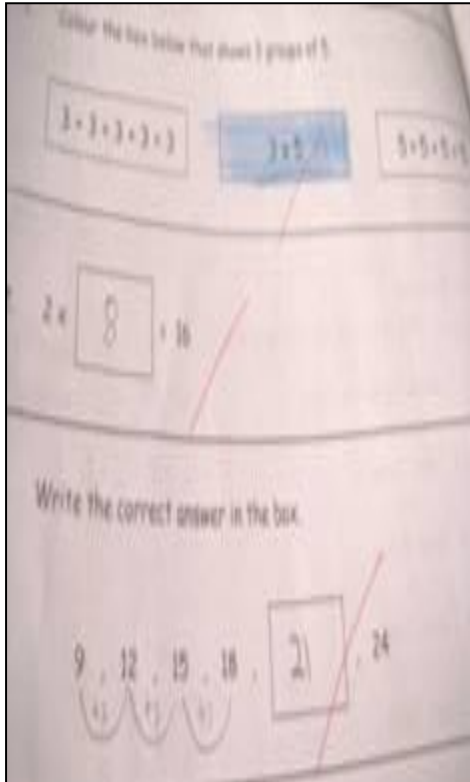
Self & Peer Assessment

	Please tick(✓)		
	Yes	Sometimes	No
I looked at my friends while presenting.			
I spoke clearly.			
My friends could hear me.			
I spoke in complete sentences.			

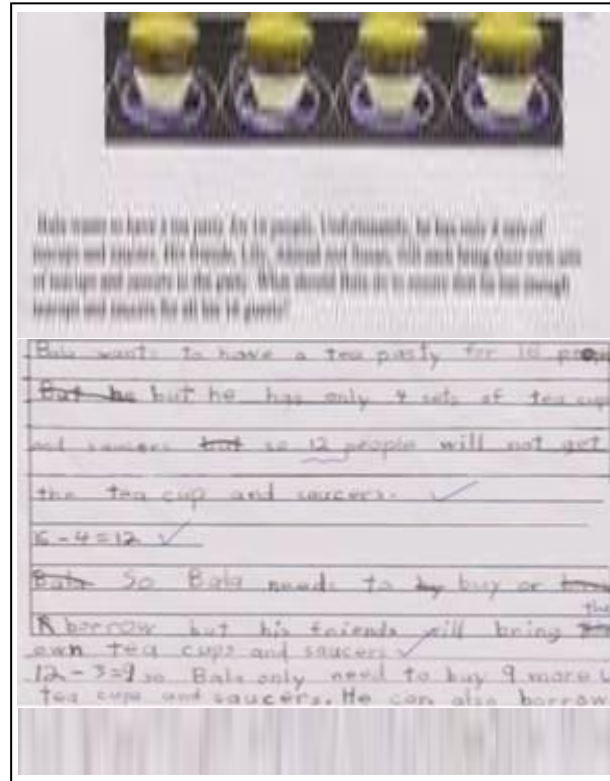
	Please tick(✓)		
	Yes	Sometimes	No
My friend looked at us while presenting.			
My friend spoke clearly.			
My friend was well-prepared.			
My friend knows the topic well.			



How will my child be assessed for Math?



Bite-Sized Review



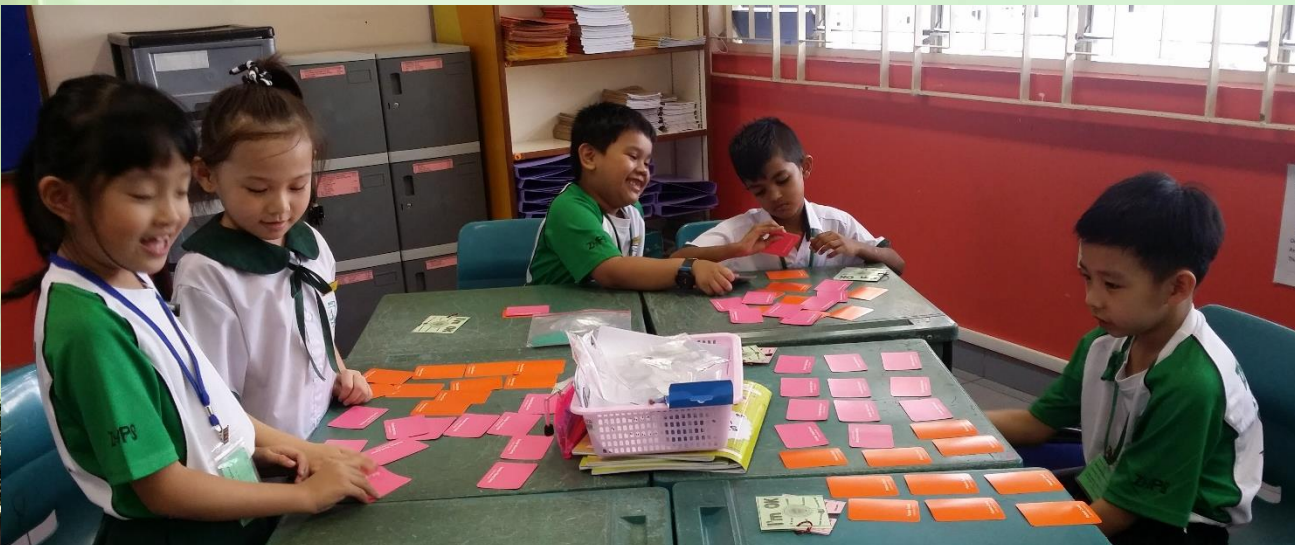
Journal Writing



Performance Tasks



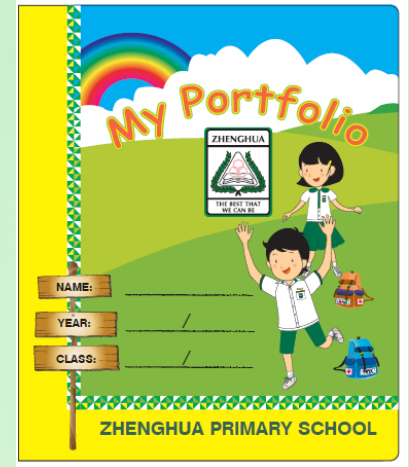
A range of appropriate assessment tasks and practices are used to assess other subjects



How will you receive feedback on your child's progress?

1) Holistic Assessment Portfolio

- Termly progress reports will be shown with the portfolio
- Portfolio contains a good sample of your child's work and performance tasks in all subjects
 - with rubrics
 - with teacher's qualitative comments



How will you receive feedback on your child's progress?

2) Mid-year and End-of-year report cards

- Qualitative descriptors (Learning Outcomes) to show your child's learning progress
- Overall qualitative comments on your child's learning



Partnership with Parents

Term 2: Parent-Child-Teacher Conference



Resilience, Innovation, Integrity, Care, Collaboration and Excellence

Programme for Active Learning



PAL



Resilience, Innovation, Integrity, Care, Collaboration and Excellence

The 2 Broad Areas in PAL

1. Sports & Outdoor Education
2. Performing & Visual Arts



Resilience, Innovation, Integrity, Care, Collaboration and Excellence



Objectives of PAL

- Provide P1 and P2 students with broad exposure and experiences through fun & varied activities
- Facilitate holistic development in the 5 domains (cognitive, moral, social, aesthetics, physical)
- Provide varied avenues to develop *social emotional competencies*



Resilience, Innovation, Integrity, Care, Collaboration and Excellence

What are students expected to learn through PAL?

3 Learning outcomes

1. Exhibit confidence in what they do and express themselves effectively
2. Exhibit curiosity and positive attitudes to learn
3. Enjoy group experiences and teamwork



Characteristics of PAL –

- Learning in a Creative Way
- Opportunities for Children to Create



Resilience, Innovation, Integrity, Care, Collaboration and Excellence

Characteristics of PAL :

- Experiential in Nature
- Fun & Enjoyable



Resilience, Innovation, Integrity, Care, Collaboration and Excellence



Characteristics of PAL –

■ Incorporates Values Education & SEL



Resilience, Innovation, Integrity, Care, Collaboration and Excellence

PAL in ZHPS

- P1 - 3 modules
- Each module spans 7 weeks
- 2 hrs of PAL a week
- Lessons on Monday or Wednesdays, 11.30 – 1.30 am

P1 Module

1. Outdoor Education
2. Visual Art
3. Sports and Games

The End



Resilience, Innovation, Integrity, Care, Collaboration and Learning

